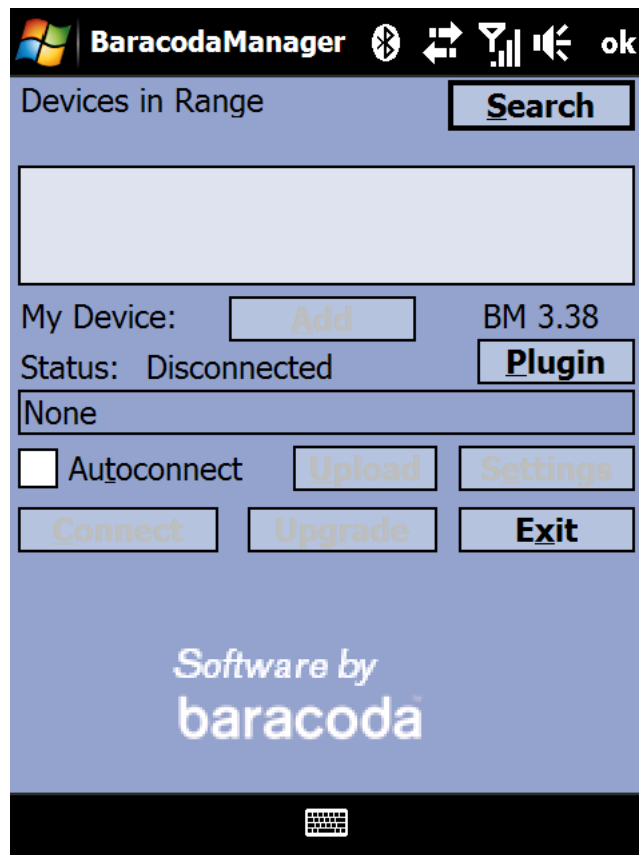


BM and BM C&S for PDA

Installation Guide

©Baracoda TM – November 2010



SUMMARY

<u>SUMMARY</u>	<u>2</u>
<u>REVISION HISTORY</u>	<u>3</u>
<u>INTRODUCTION</u>	<u>4</u>
<u>1. AUTOMATIC INSTALLATION</u>	<u>5</u>
1.1. SYNCHRONIZING PDA WITH THE PC	5
1.2. AUTOMATIC INSTALLER PACKAGE	6
1.3. REINSTALLING THE BARCODAMANAGER FOR PDA	12
<u>2. MANUAL INSTALLATION AND DEPLOYMENT</u>	<u>14</u>

Revision History

Changes to the original manual are listed below.

Document	Date	Description
3.34	19th June 08	Initial release
3.34.1	30th July 08	Connect and Scan added
3.34.2	10th September 08	Installer modified
3.34.3	15th October 08	Introduction modified
3.35	23rd December 08	Version incremented
3.36	3rd March 09	Version incremented
3.36.3	10th September 09	Version incremented
3.37	23rd February 10	Version incremented
3.38	23rd November 10	Version incremented

Introduction

The **BaracodaManager for PDA** software allows the user to easily operate their barcode reader(s), including:

- Connecting automatically to the barcode reader(s) that the user wants to use
- Inserting scanned barcodes to a selected field in the client application (KEmul plugin) or displaying them (Terminal plugin)
- Setting a barcode reader(s) parameters (PIN code and others)
- Uploading barcodes saved in a barcode reader(s) memory.

Requirements (classical version):

- OS: PPC 2002, PPC2003, PPC2003SE, WM5, WM6
- Broadcom/Widcomm Bluetooth stack - version 1.3.x.x or newer
- Microsoft Bluetooth stack

Requirements (Connect and Scan version):

- OS: PPC2003, PPC2003SE, WM5, WM6
- Microsoft Bluetooth stack

The **BaracodaManager for PDA** can be downloaded from the Partners download section of Baracoda website (registration is required):

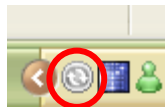
<http://www.baracoda.com>

1. Automatic installation

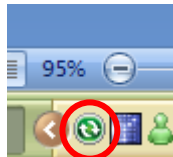
1.1. Synchronizing PDA with the PC

In order to be able to use the automatic installation program, the user should make sure that the PDA they want to install the BaracodaManager on is synchronized with their PC through ActiveSync. The current version of ActiveSync can be downloaded from Microsoft website.

When ActiveSync is active and no PDA is synchronized with the PC, the ActiveSync system tray icon is white-gray:



As soon as a PDA has been synchronized with the PC, this icon will become green:



1.2. Automatic installer package

The BM_PDA_v3_xx.zip file contains the automatic installer package of the BaracodaManager for PDA. The user will need to unzip this file to continue with the installation. The installation is executed by the InstallBM.exe file that can be found in the root directory of the package. As soon as the file in question is launched, it shows the main installation window:

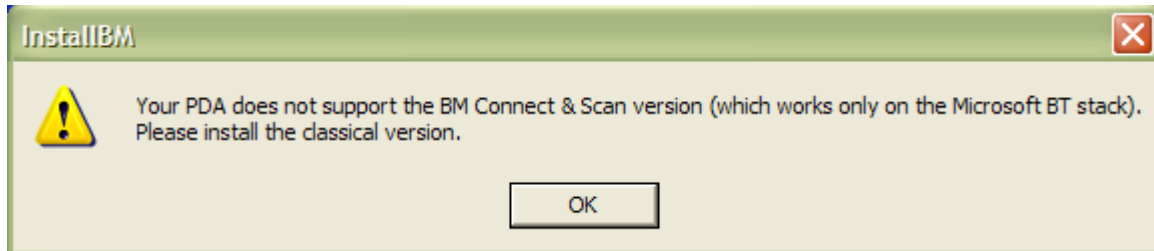


Note: InstallBM.exe should be launched directly on the PC and not on the synchronized PDA.

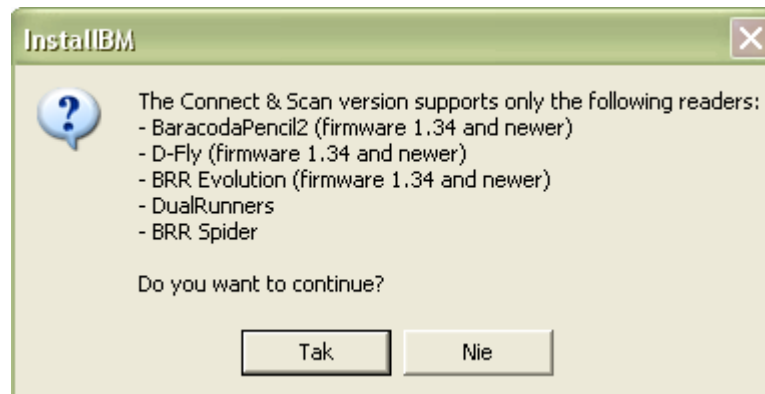
To continue, the user should click one of the two available buttons:

- “Classic BM” to install the standard version of the BaracodaManager (which uses Bluetooth inquiries to find and connect Baracoda barcode readers)
- “BM Connect & Scan” to install the Connect and Scan version

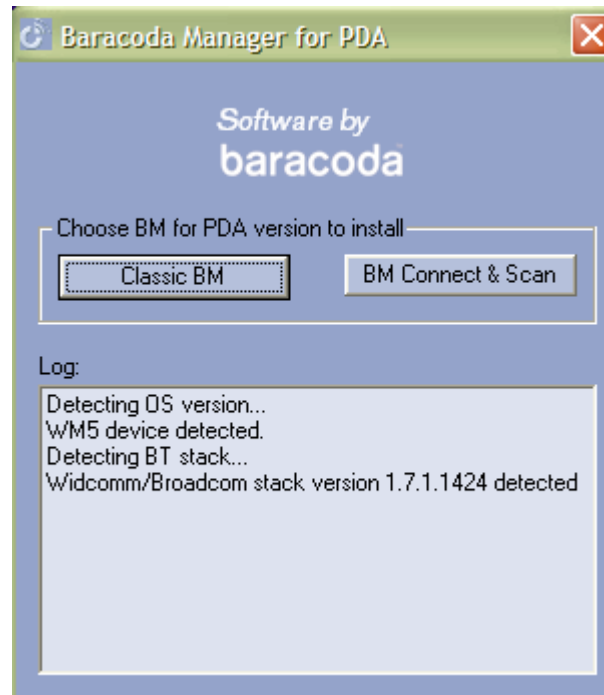
If the user chooses to install the Connect and Scan version and the synchronized PDA does not support this version (because it does not have the Microsoft Bluetooth stack), the user will see the following popup window:



In the case where the PDA does support the Connect and Scan version, another popup will be activated:

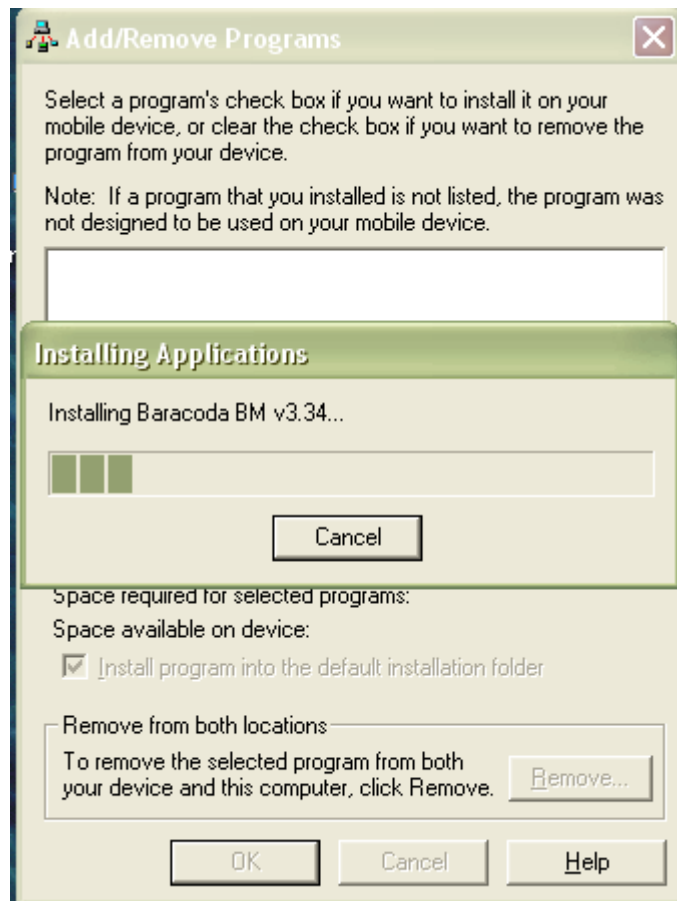


As soon as the selection has been done, the installation program will detect the OS version and Bluetooth stack installed on the PDA:



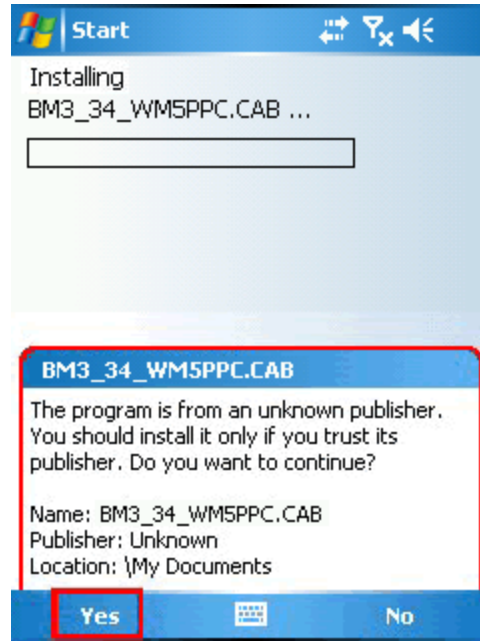
The above example provides information about what is shown when a Windows Mobile 5 device with the Broadcom/Widcomm stack is synchronized with the PC.

Next, the installation program will install the BaracodaManager cab package on the PDA:



For instructions on how to install the BaracodaManager on a PDA which already has this software, please check the [Reinstalling the BaracodaManager for PDA](#) section.

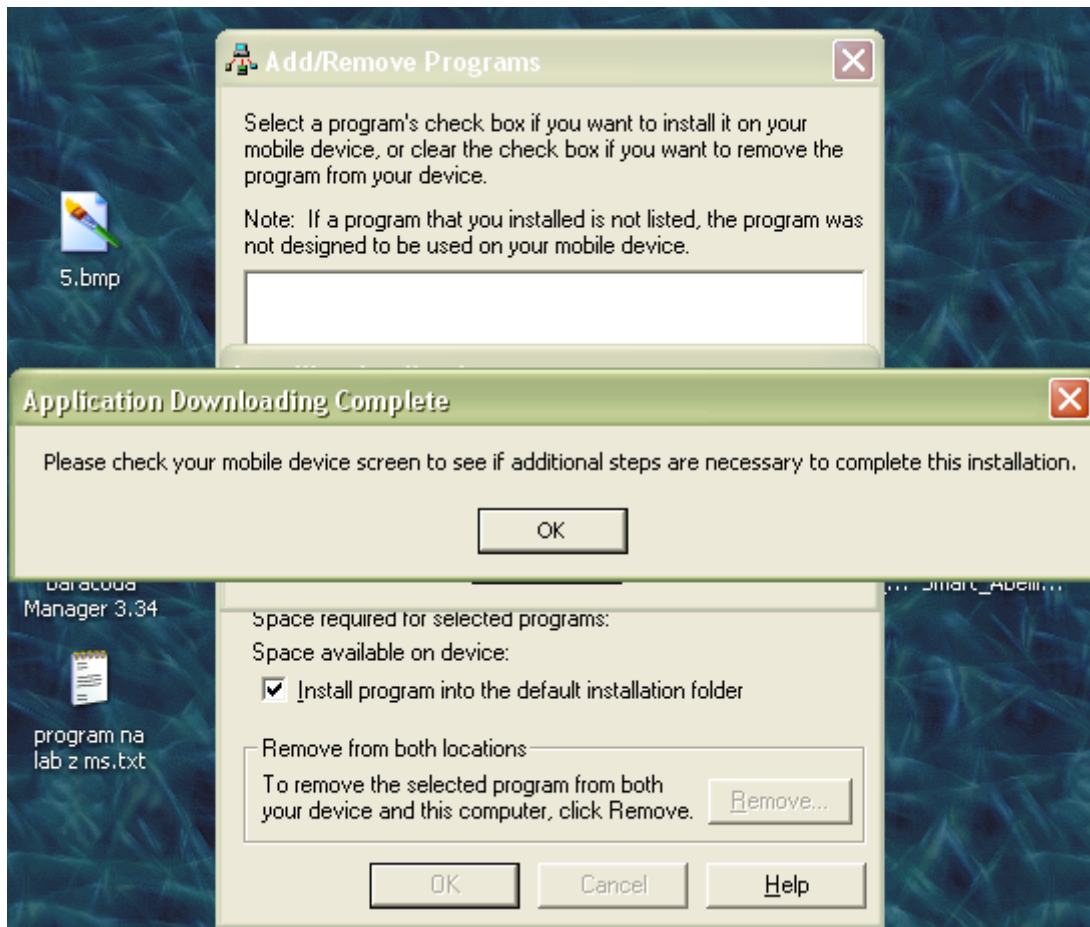
If the user has synchronized a Windows Mobile 5 or 6 device, the PDA may show a warning window:



If this happens, the user should click the Yes button at the bottom of the window to confirm that they want to install the BaracodaManager.

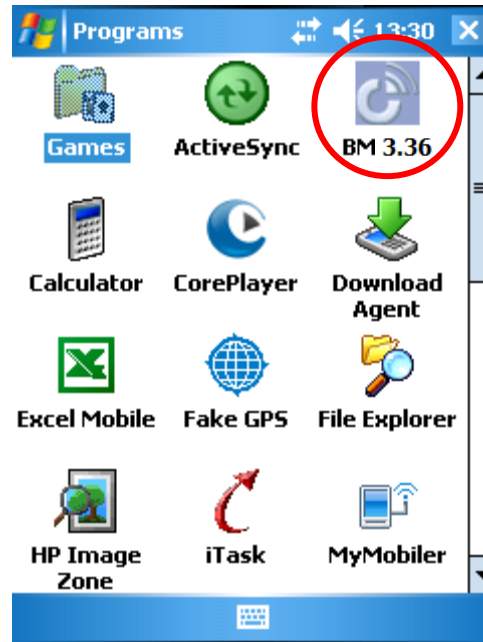
The BaracodaManager cab packages for Windows Mobile devices have been signed with the Baracoda Authenticode certificate. The certificate itself (BaracodaCertificate.cab) is available to download from the Partners download section of Baracoda www.baracoda.com website (registration is required).

When the installation has finished, the user will be shown the following window:

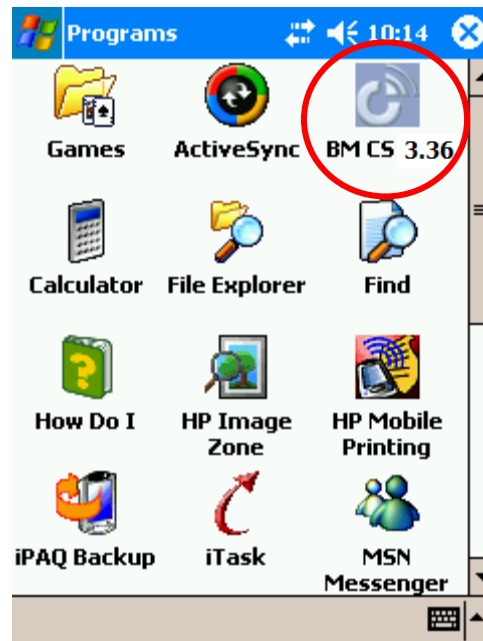


At this point the BaracodaManager is fully functional on the PDA and can be run by using the shortcut in the Programs menu:

- Classical version:

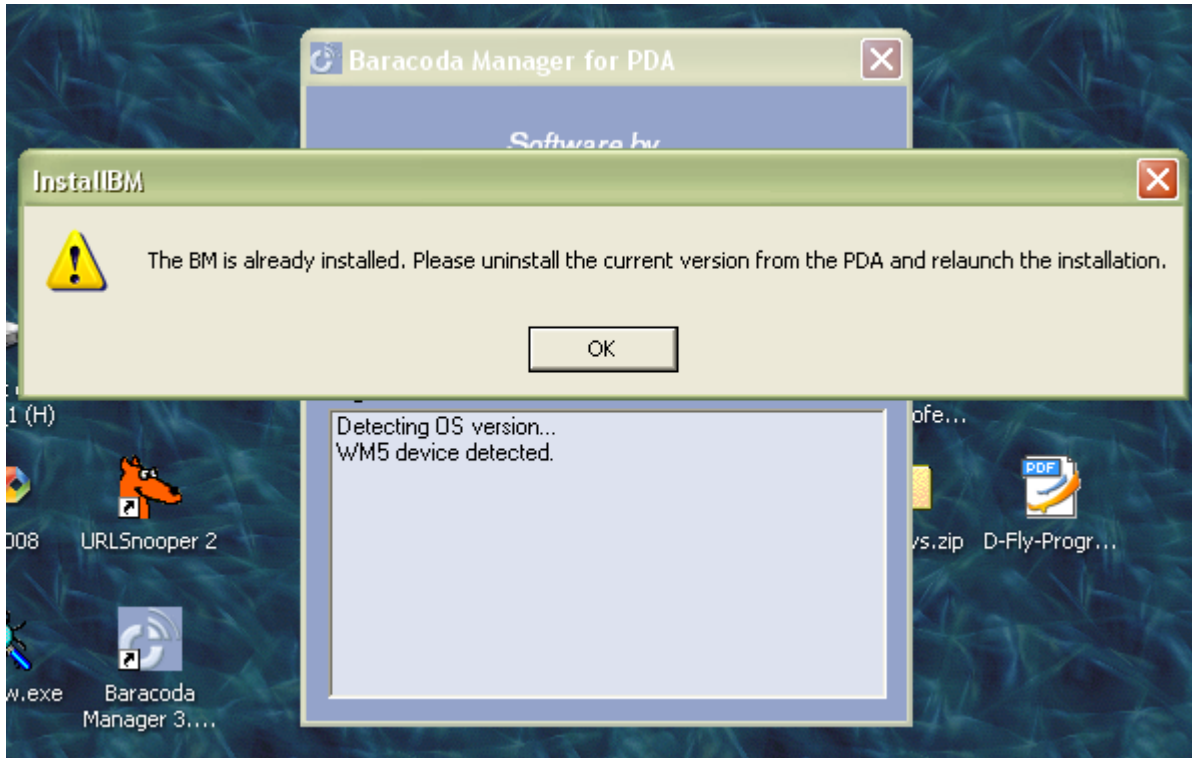


- Connect and Scan version:

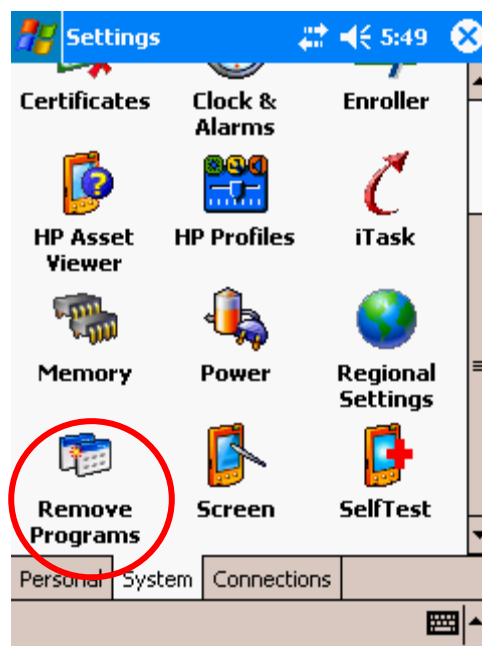


1.3. Reinstalling the BaracodaManager for PDA

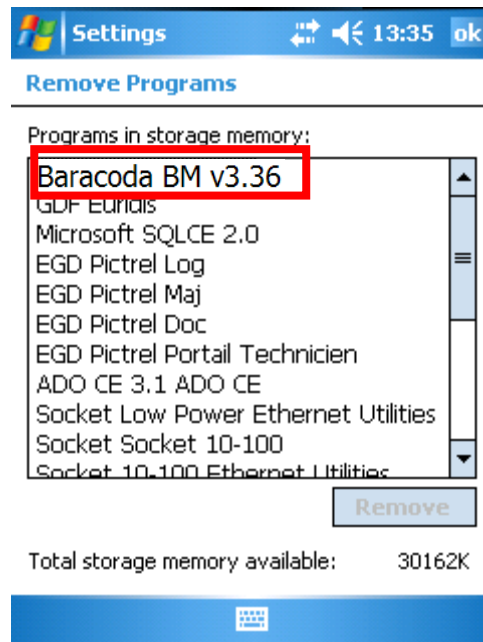
If the user tries to install the BaracodaManager over an existing installation, the following window will be shown by the automatic installer:



As indicated on the popup window, to be able to complete the installation, the user should first uninstall the current **BaracodaManager** version from the PDA. This operation can be done by opening the Settings window from the StartMenu and then selecting System/Remove Programs shortcut:



The next window will show a list of all programs currently installed on the PDA:



To uninstall the **BaracodaManager**, the user needs to select the corresponding list entry and click the Remove button. Only then will the user be able to reinstall the BaracodaManager.

2. Manual installation and deployment

In situations where using the automatic installer program is not desired, the user can choose the correct cab package from the BaracodaManager for PDA zip file. The cab packages of the classical version of the BaracodaManager can be found in the *BM_PPC* directory of the zip package and of the Connect and Scan version in the *CS* subdirectory of the *BM_PPC* directory.

The following table shows the OS and BT compatibility of every cab package:

	Package	Compatibility
Classic BaracodaManager	BM3_38_PPC2003_MS.CAB	PPC 2003 with the Microsoft Bluetooth stack
	BM3_38_WM5PPC.CAB	Windows Mobile 5/6 with the Microsoft Bluetooth stack
	BM_338_WIDCOMM1_3_1_46.CAB	PPC 2002 with the Widcomm 1.3.x.x Bluetooth stack
	BM_338_WIDCOMM1_4.CAB	PPC 2002/2003 with the Widcomm 1.4.x.x Bluetooth stack
	BM_338_WIDCOMM1_5.CAB	PPC 2003 with the Widcomm 1.5.x.x stack or newer
	BM_338_WIDCOMM1_7_WM5.CAB	Windows Mobile 5/6 with the Widcomm Bluetooth stack (all versions)
BaracodaManager C&S	BM_CS_338_MS.CAB	PPC 2003 / WM5 / WM6 with the Microsoft Bluetooth stack