

BaracodaManager software v3.38 for Smartphone platform (WM5 / WM6)

©Baracoda [™] – November 2010

REVISION HISTORY

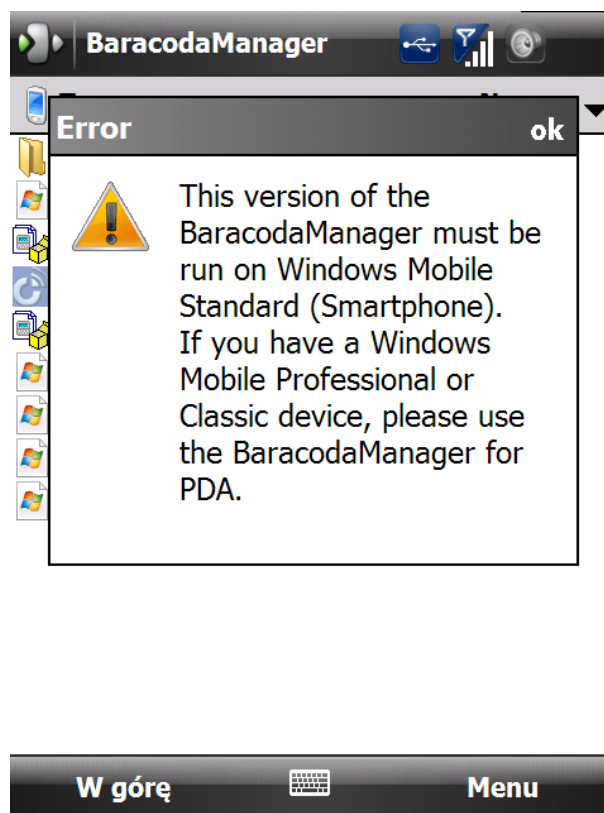
Changes to the original manual are listed below.

Document	Date	Description
1.0	23rd April 08	Initial release for BaracodaManager v3.32
3.34	17th June 08	Upgrade for BaracodaManager v3.34 (BRR Evolution supported)
3.35	2nd January 09	Upgrade for BaracodaManager v3.35 (TagRunners supported)
3.36	30th March 09	Upgrade for BaracodaManager v3.36 (DualRunners supported)
3.36.2	25th May 09	OS detection, BaracodaManager version shown on the title bar
3.36.3	2 nd October 09	Version incremented
3.37	24 th February 10	Version incremented, signature capture added
3.38	23 rd November 10	Version incremented

INTRODUCTION

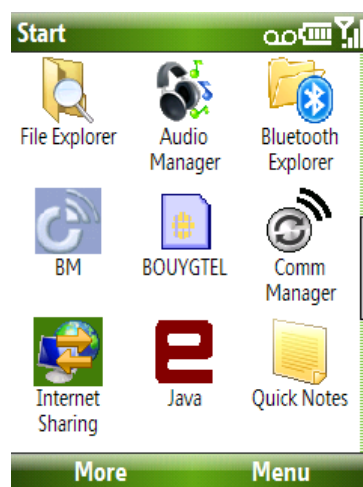
This document explains how to install step by step our BaracodaManager software on the Smartphone platforms using Windows Mobile 5 or Windows Mobile 6 / Windows Phone.

Please note that the BaracodaManager for Smartphone can only be run on Windows Mobile 5 Smartphone or Windows Mobile 6 Standard devices. If you have a Windows Mobile Classic or Professional device, the following window will be shown at startup:



As suggested, please use the BaracodaManager for PDA (also available on www.baracoda.com) if you have a Windows Mobile Classic or Professional device.

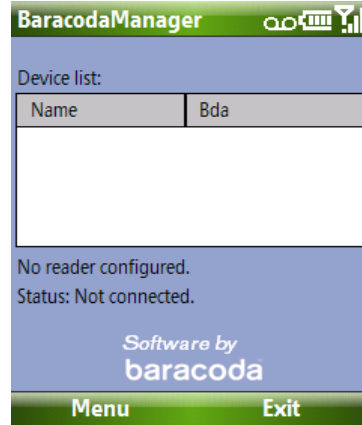
1. Save the BM.CAB file to the computer's Desktop folder.
2. Create an ActiveSync between the computer and the mobile device.
3. Use the ActiveSync tool to explore the mobile device.
4. Copy and Paste the BM.CAB file to the mobile device.
5. From this step onwards, ActiveSync is not required.
6. On the mobile device, activate the BM.CAB file and allow it to self extract.
7. Once the file is installed make sure Bluetooth is active on the mobile device.
8. As part of the installation process the BaracodaManager will create a shortcut in the Programs menu after the installation. See Picture 1.

Picture 1

9. Activate the BaracodaManager.

10. The Main Window in the BaracodaManager will show a device list and two labels. See Picture 2.

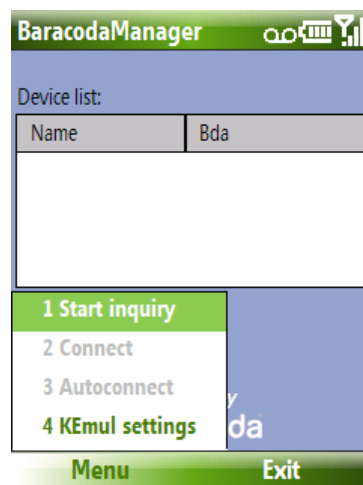
Picture 2



- The device list shows the local Bluetooth devices and it will be empty the first time the BaracodaManager is launched.
- The first label is the “Configured Device” label.
- This label shows the configured devices and it will show “No Configured Reader” the first time the BaracodaManager is launched.
- The second label is the “Status” label.
- This label will give the connection status of the device and it will show “Not Connected” the first time the BaracodaManager is launched.

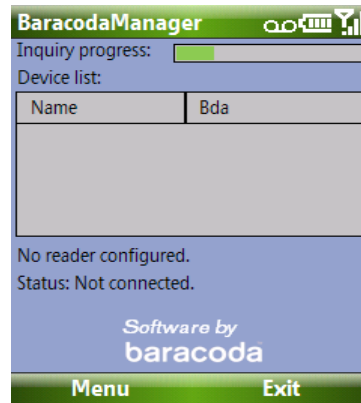
11. The main menu allows the user to launch a Bluetooth inquiry, connect a Baracoda reader, and configure the keyboard emulation options. See Picture 3.

Picture 3



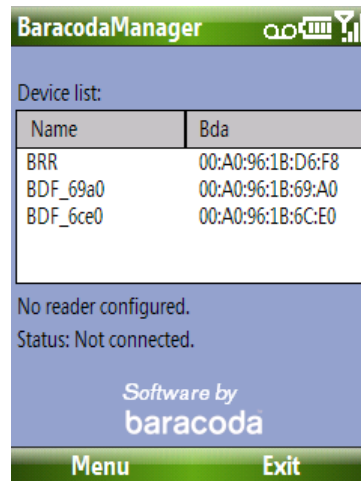
12. The two connection options on the main menu are disabled with a Baracoda reader is not configured.
13. When a Bluetooth Inquiry is launched, a progress bar is shown at the top of the window and the device list is disabled. See Picture 4.

Picture 4



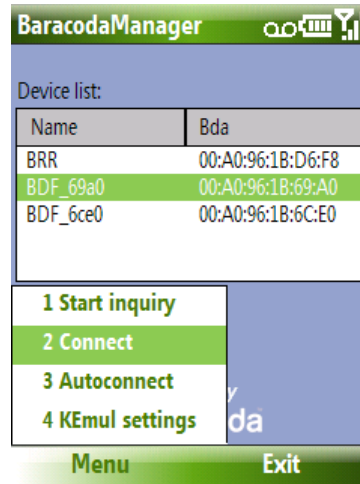
14. Once the Bluetooth inquiry has completed, the device list is populated with the devices and MAC addresses of the Bluetooth devices that were discovered during the Bluetooth inquiry. See Picture 5.

Picture 5



15. The user selects the Baracoda reader to connect to the handset and uses the connect option from the main menu accomplish this Bluetooth connection. See Picture 6.

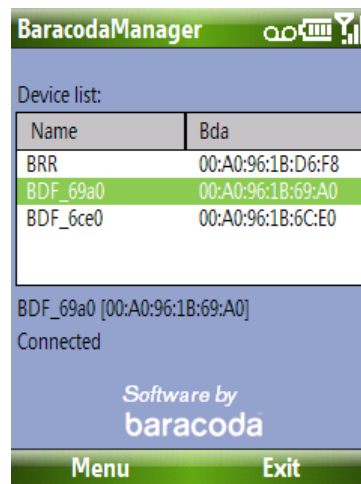
Picture 6



16. If this is the first Bluetooth connection between the mobile device and the Baracoda reader the user will need to enter the Bluetooth PIN code to authenticate the connection. The default PIN code for Baracoda readers is "0000".

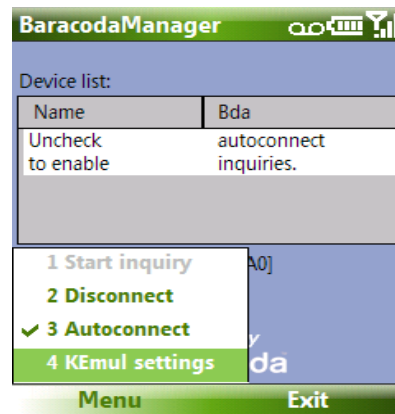
17. Once this operation is complete the status label will indicate that the reader is connected. See Picture 7.

Picture 7



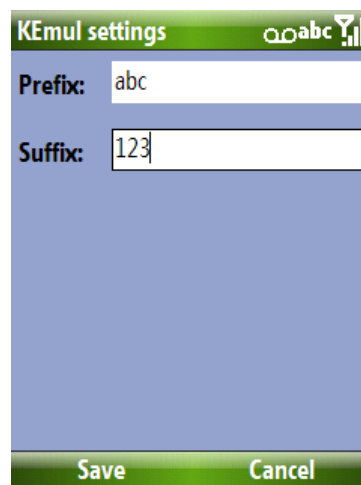
18. The user can use the auto-connect option on the main menu to activate the auto-connect feature of the BaracodaManager that allows the BaracodaManager to automatically connect to the chosen device whenever the BaracodaManager is active and the device is turned on. **PLEASE NOTE: when the auto-connect feature is enabled the BaracodaManager cannot launch a Bluetooth inquiry. See Picture 8.**

Picture 8



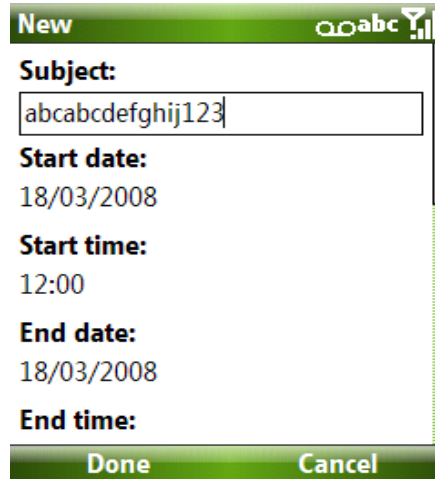
19. The KEmul option in the main menu allows the user to set a prefix and suffix for every scanned barcode.
- a. The Picture 9 shows a prefix of “abc” and a suffix of “123” set up in the KEmul option of the main menu.

Picture 9



- b. The Picture 10 shows how the data would look if the barcode that was scanned was “abcdefghij”.

Picture 10



- c. The text box of the second picture reads “abcabcdefghij123”. This is the correct format illustrating how the prefix and suffix are applied to the scanned barcode.

20. Baracoda RoadRunners Evolution –FE/FS (2D) and DualRunners –FE/FS (2D) readers can capture signatures/images since firmware version 1.48. If the reader captures a signature/image (please refer to the reader user guide on how to activate and parameter the signature mode), the BaracodaManager will save the image to a file in the smartphone’s root directory:

- **BaracodaPicture_YYMMDDHHMMSS.jpg** – (where **YYMMDDHHMMSS** is the timestamp generated by the smartphone) if the reader timestamp is not active or
- **BaracodaPicture_YYMMDDHHMMSS_YYMMDDHHMMSS.jpg** – (where the first timestamp is generated by the smartphone and the second one by the reader) if the reader timestamp is active.