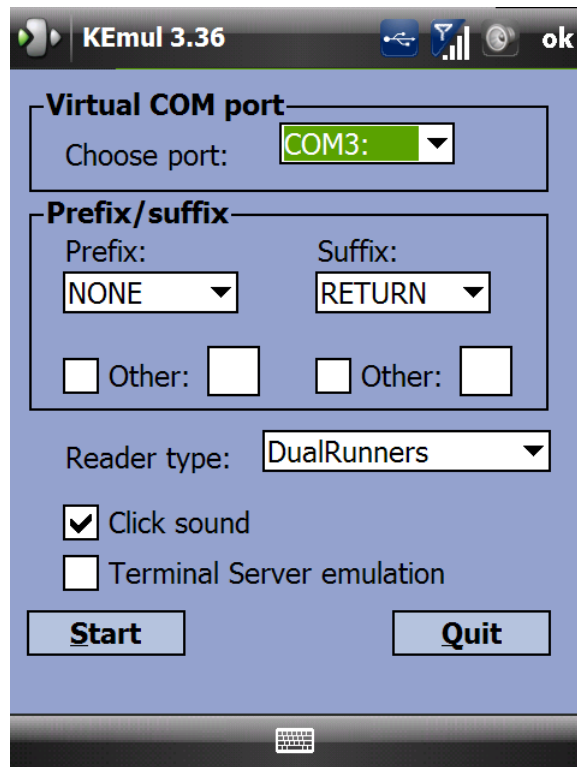


# KEmul for PDA Installation Guide

---

©Baracoda<sup>™</sup> – September 2009



## SUMMARY

<u>SUMMARY</u> .....	<u>2</u>
<u>REVISION HISTORY</u> .....	<u>3</u>
<u>INTRODUCTION</u> .....	<u>4</u>
<u>1. KEMUL INSTALLATION</u> .....	<u>5</u>

## Revision History

Changes to the original manual are listed below.

<b>Document</b>	<b>Date</b>	<b>Description</b>
3.34	6 <sup>th</sup> June 08	Initial release
3.35	18 <sup>th</sup> December 08	TagRunners added, click sound checkbox added
3.36	2 <sup>nd</sup> March 09	DualRunners added
3.36.3	10 <sup>th</sup> September 09	Version update

## Introduction

The **KEmul** (keyboard emulator) for **Pocket PC and Windows Mobile** devices can be used on all Bluetooth stacks that are currently available on the market (Widcomm/Broadcom, Microsoft, Toshiba and others). It connects to an outbound virtual COM port installed on the PDA by the Bluetooth stack to read data from a Baracoda reader. This data will be transformed into keyboard strokes corresponding to the scanned barcode text.

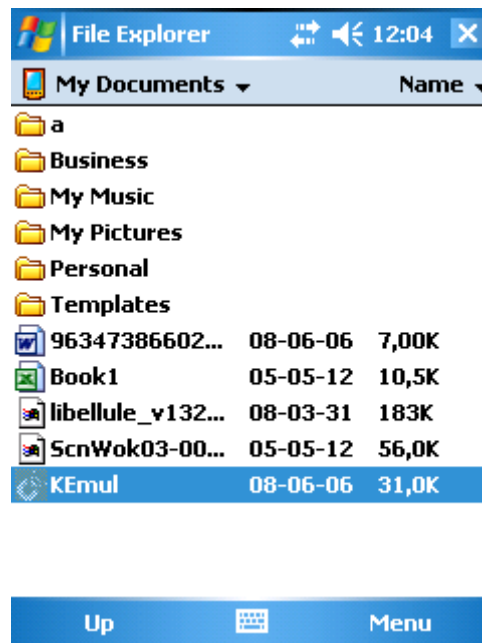
The **KEmul for Pocket PC and Windows Mobile** can be downloaded from the Partners download section of Baracoda website (registration is required):

<http://www.baracoda.com>

## 1. KEmul installation

The KEmul zip package contains a file named KEmul.exe. It is the keyboard emulator application that will need to be copied on the PDA. In order to do that, the PDA should be synchronized with the PDA with ActiveSync (either via USB or Bluetooth).

Please note that the KEmul does not need to be installed on the PDA (that is it does not create a shortcut in the Programs menu), but should be launched directly from the directory where it was copied on the PDA. As an example, the screenshot below shows the KEmul.exe file copied to the *MyDocuments* directory:



Pic. 1 KEmul copied to the PDA

Attention: if the user tries to run KEmul.exe directly on the PC, the application will crash because it was compiled for the PDA architecture (ARM processors).